

Industrial Safety Mats



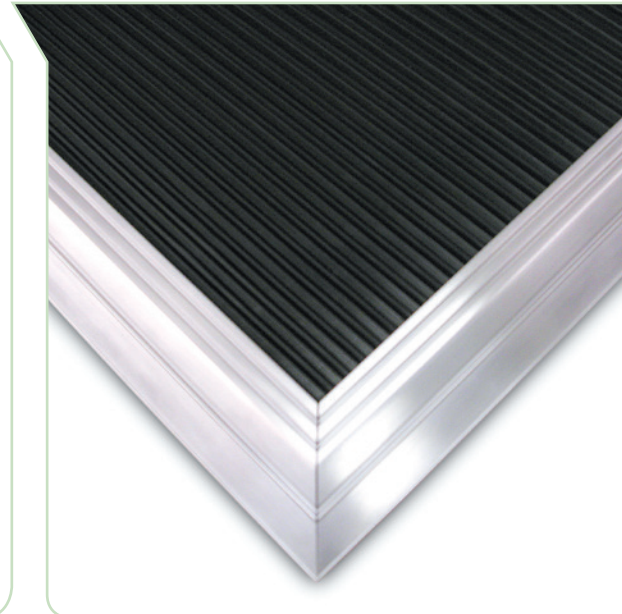
The power of control. Automated.

For more than five decades, the Larco brand has focused on developing and producing the most reliable and durable presence-sensing mats available. Designed to meet stringent industrial requirements, Larco industrial safety mats offer a long-lasting solution to machine guarding needs.

Impact resilient, abrasion resistant and totally submersible, Larco mats set the industry standard, providing unparalleled durability and versatility.

Larco safety mats offer multiple custom options:

- Standard colors: black and yellow
Optional colors: brown, gray, blue, green and red
- Informational messages/symbols such as: Caution and Do Not Step
- Custom logos
- Unlimited custom sizes
- Custom shapes, notches, angles and radii



Additional Mat Styles

Comfort Step

The Comfort Step style is designed to reduce worker fatigue in machinery safeguarding applications where frequent worker presence is required, such as load/unload stations.

SureStep

The SureStep style is designed for unique applications that require additional slip protection beyond that provided by Larco's standard ribbed mat. The mats are treated with a high-traction, long-wearing granular surface material that is bonded to the mat's vinyl surface with an adhesive that is designed to withstand oils, water, and other fluids. The mats are constructed to withstand heavy pedestrian and vehicular traffic.

Optional Mounting Method

Labor-Saver Self-Adhesive System

This mounting method style is a specially formulated adhesive applied to either the trim surface or directly onto the mat to hold the mat in place without screws or other metal fasteners. No drilling is required. Primarily used in applications where mats are placed in recessed areas or on platform walkways and in industrial applications. Installation requires a smooth mounting surface that is free of grease and dirt.

Features and Benefits

- **Impact Resilient** - Heavy-duty electrode assembly and durable outer shell provide excellent impact resilience and the ability to withstand heavy loads of up to 3,000 psi.
- **Highly Sensitive** - requires only 5-10 lbs. for activation in normal foot traffic.
- **Totally Submersible** - Hermetically sealed in a thick, seamless, injection-molded vinyl shell which is not laminated and will not separate. Impervious to fluids and suitable for even the wettest industrial environments.
- **4-Year Warranty**

TECHNICAL SPECIFICATIONS

ELECTRODE ASSEMBLY

Switch	Normally Open Contact
Material	High-durability 24-gauge Steel
Cord Material	Standard 18-gauge, 4-wire, Single-jacketed Lead Wires and Optional Application-specific Wiring Options
Sealing	Hermetically Encapsulated Switch and Lead Wires
Standards	Designed to Meet IP67 and NEMA 6, Water-tight and Totally Submersible

OUTER SHELL

Material	Proprietary Molded Vinyl
Hardness	Shore A Hardness 72 ±2 (Comfort Step 40 ±2)
Surface	Ribbed to Prevent Slipping. Aggressive Non-skid SureStep Surface is Available
Colors	Standard: Black and Yellow, Call for Custom
Customization	Monogram, Logos and Lettering Capabilities

OTHER

Load Capacity	3,000 psi
Temperature Range	-35°F to +120°F (-37°C to 49°C)
Activation Sensitivity	5-10 lbs. in Normal Foot Traffic
Electrical Characteristics	Dielectric Strength-300 volts/mil.
Chemical Resistance	Good Resistance to: Mineral Acids, Organic Acids, Alcohols, Aldehydes, Caustics, Petroleum Solvents & Oils Not Recommended for: Organic Solvents, Chlorinated Solvents For a Complete Chemical Resistance Chart, Contact ATEK directly.
Application Standards	Category 3 Device. Designed to Meet or Exceed ANSI B11.19, OSHA 1910.212, ANSI-RIA 15.06, EN 1760-1

ORDERING INFORMATION

Contact Customer Care @ 1-800-523-6996



Larco mats are designed to continue working, regardless of fluids, high traffic or other harsh industrial conditions.

Applications

Larco industrial safety mat systems have been used to successfully reduce hazards in a number of industries in machine point-of-operation, area and perimeter guarding applications, including:

- Assembly Machines
- Automated Material Handling
- CNC Punches and Tube Benders
- Conveyers
- Laser Welding/Cutting
- Packaging Machinery
- Paper Converting Machinery
- Pick and Place Robots
- Plastics Molding Machines
- Robotic Welding
- Textile Machinery
- Water Jet Machines

View the full product line at Larco.com



201-0005-000 Rev. G 4/20



WARNING: Cancer and Reproductive Harm - www.P65Warnings.ca.gov

ATEK Access Technologies
10025 Valley View Road, Ste. 190
Eden Prairie, MN 55344 U.S.A.

PH: 1.800.523.6996
FAX: 1.800.589.3705
+1.218.829.9797

www.atekaccess.com



Access the power of technology.